

Hose Reel Swivel Kit and Swivel Seal Kit

313432C
EN

- Swivel and Swivel Seal Replacement Instructions -



Important Safety Instructions

Read all warnings and instructions in this manual. Save these instructions. For complete Warnings and instructions, see instruction manual 312431.

Swivel Kits - For Low & Medium Pressure Hose Reels: 15Y480 or for BSP 24M579; For High Pressure, Single Pedestal (SD) Hose Reels: 26A155 or for BSP 26A156; For High Pressure, Dual Pedestal (XD) Hose Reels: 26A153 or for BSP 24A154





Swivel Seal Kits - For Low & Medium Pressure Hose Reels: 24A952; For High Pressure, Single Pedestal (SD) Hose Reels: 24A953

Hose Seal Kit - 24M713 for BSPP

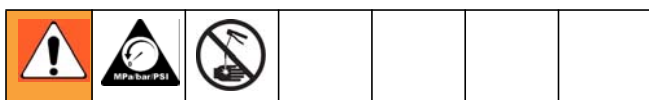
NOTE:

- Swivel Kits include **all** parts necessary to replace the swivel assembly, including the seals which are also provided in Swivel Seal Kits 24A952 or 24A953.
- If only the swivel seals require replacement, use Swivel Seal Kit 24A952 or 24A953.
- Swivel Seal Kits are not available for High Pressure, Dual Pedestal (XD) Reels. If replacement is required, Swivel Kit 26A153 or 26A154 should be used.

Warnings

 WARNING	
  	<p>SKIN INJECTION HAZARD</p> <p>High-pressure fluid from dispense device, hose leaks, or ruptured components will pierce skin. This may look like just a cut, but it is a serious injury that can result in amputation. Get immediate surgical treatment.</p> <ul style="list-style-type: none"> Do not point dispense device at anyone or at any part of the body. Do not put your hand over the end of the dispense outlet. Do not stop or deflect leaks with your hand, body, glove, or rag. Follow Pressure Relief Procedure in this manual, when you stop dispensing and before cleaning, checking, or servicing equipment.

Pressure Relief Procedure



1. Close the supply pump's bleed-type master air valve (required for pneumatic systems).
2. Open the dispensing valve until pressure is fully relieved.
3. Open the fluid valve at the pump fluid outlet. Leave the drain valve open until you are ready to use the system again.


*If you suspect that the dispensing valve, extension, or grease fitting coupler is clogged, or that pressure has not been fully relieved after you have followed the steps above, **very slowly** loosen the coupler or hose end coupling to relieve the pressure gradually, then loosen it completely. Then clear the clog.*

Instructions

HR & HP Models (LD & SD Series, single pedestal)



1. **Relieve the pressure.**
2. Decrease spring tension by removing loops of hose from the reel.

						
<ul style="list-style-type: none"> Never allow the reel to spin freely. Doing so causes the reel to spin out of control, which could cause serious injury if you are hit by a tool or the hose. Reel must be bolted securely in place when making adjustments. 						

Refer to FIG. 1 for steps 3 - 10 (unless otherwise indicated).

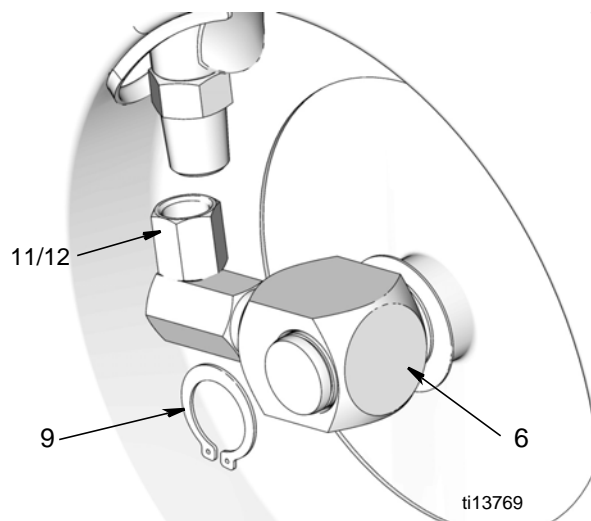



FIG. 1

3. Disconnect hose from elbow (11/12).
4. Remove retaining ring (9) and elbow (6).
5. Disassemble the swivel parts as shown for your model on page 6.
6. Clean the parts and inspect them for wear or damage.

7. Grease all parts and lubricate the cavity of the swivel assembly with high-quality grease.
8. Assemble the parts in the order shown for your model on page 6 and install swivel assembly in hose reel.
9. Install elbow (6) and retaining ring (9) to hold assembly in place.
10. Connect hose to elbow (11/12).
11. Tighten spring tension.

HS Models (XD Series, dual pedestal)

1. **Relieve the pressure, page 2.**
2. Decrease spring tension.

						
<ul style="list-style-type: none"> Never allow the reel to spin freely. Doing so causes the reel to spin out of control, which could cause serious injury if you are hit by a tool or the hose. Reel must be bolted securely in place when making adjustments. 						

Refer to FIG. 2, for steps a - h.

- a. Loosen screw (2) 3-5 turns. Do not completely remove it.
- b. Use a hex wrench to loosen, the two screws (A). Do not completely remove them.
- c. Insert a 3/8" square drive breaker bar in opening (B) on the spring adjustment plate (C).
- d. While holding the breaker bar securely, completely remove the two screws (A).
- e. Firmly grasp the breaker bar with both hands and turn it counter-clockwise one turn at a time until spring tension is reduced to zero.

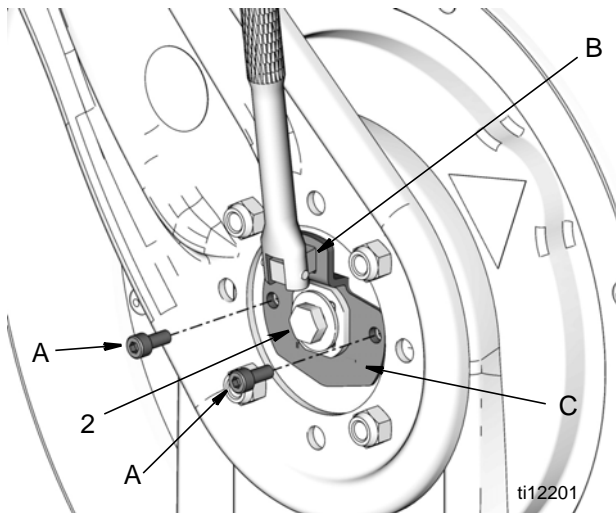


FIG. 2

Refer to FIG. 3 for steps 3 - 17 (unless otherwise indicated).

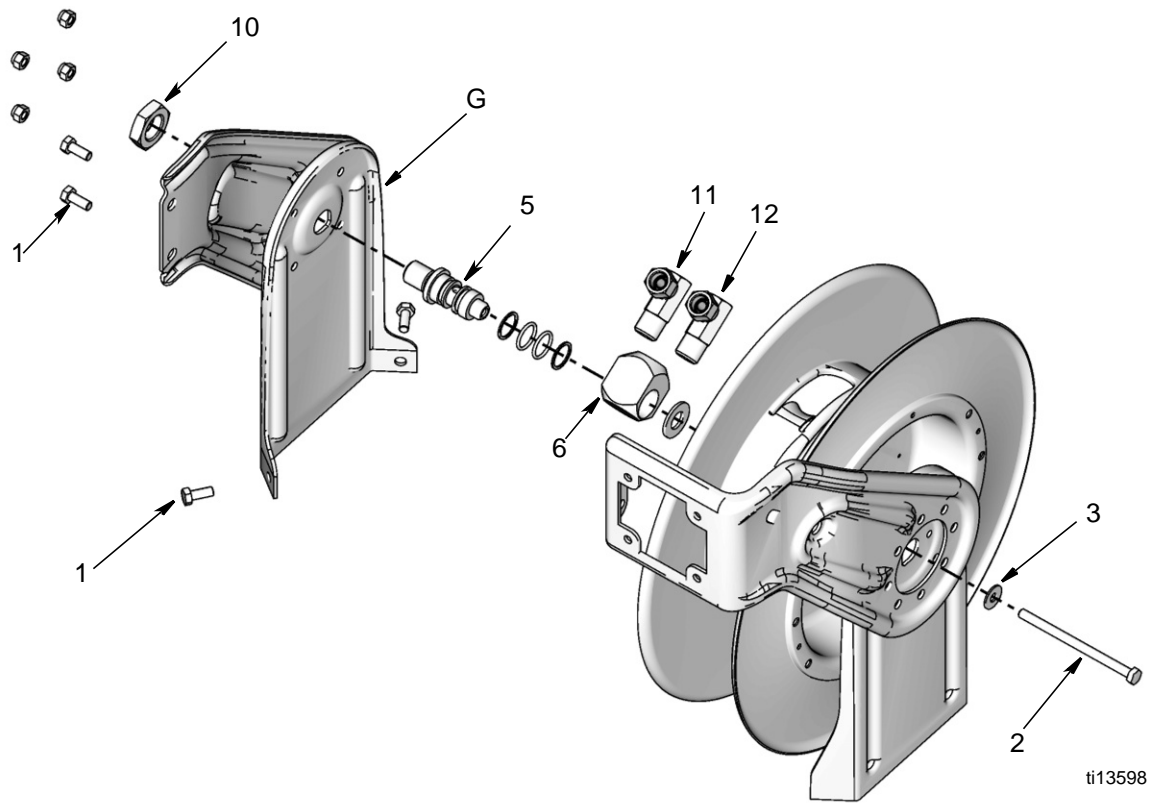


FIG. 3

3. Remove screw (2) and washer (3).
4. Remove screws (1) and nut (10).
5. Disconnect hose (not shown) from elbow (11 / 12).
6. Lay reel down on a flat work surface.
7. Remove swivel-side pedestal (G).
8. Remove swivel assembly.

Low and Medium Pressure Reels Only (High Pressure Reels, go to Step 13)

9. Disassemble the parts as shown for your model on page 6.
10. Clean the parts and inspect them for wear or damage.
11. Grease all parts and lubricate the cavity of the swivel assembly with high-quality grease.
12. Assemble parts in order shown for your model on page 6

All Reels

13. Install swivel assembly in hose reel.

Note shape (a) of swivel assembly end shown in FIG. 4 and the correct alignment of swivel to the key hole in the pedestal. For the hose reel to operate correctly, these parts must be aligned correctly.

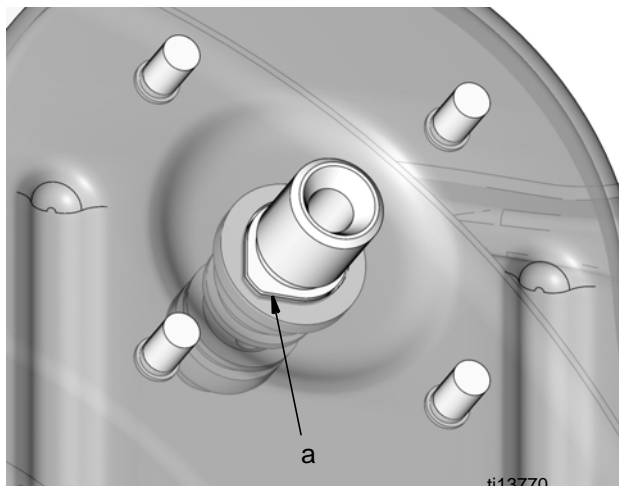


FIG. 4

14. Install swivel-side pedestal (G) on reel.
15. Replace nut (10) and screws (1).
16. Connect hose (F) to elbow (12).
17. Tighten spring tension.

Refer to FIG. 2, page 3 for steps a - e.

- a. Insert a 3/8" square drive breaker bar in opening (B) on the spring adjustment plate (C).
- b. Firmly grasp the breaker bar with both hands and turn it clockwise one turn at a time to increase (tighten) spring tension. This is typically 3-5 turns.
- c. Replace and partially tighten one screw (A). You can now remove the breaker bar. Pull out a section of hose and allow it to retract to test the tension adjustment.
- d. If additional tension is required, insert the breaker bar in the bracket again and remove screw (A). Then repeat steps b - c.
- e. When you are satisfied with the new setting, tighten screws (A) and (2).

Parts

Swivel & Swivel Seal Replacement Kits

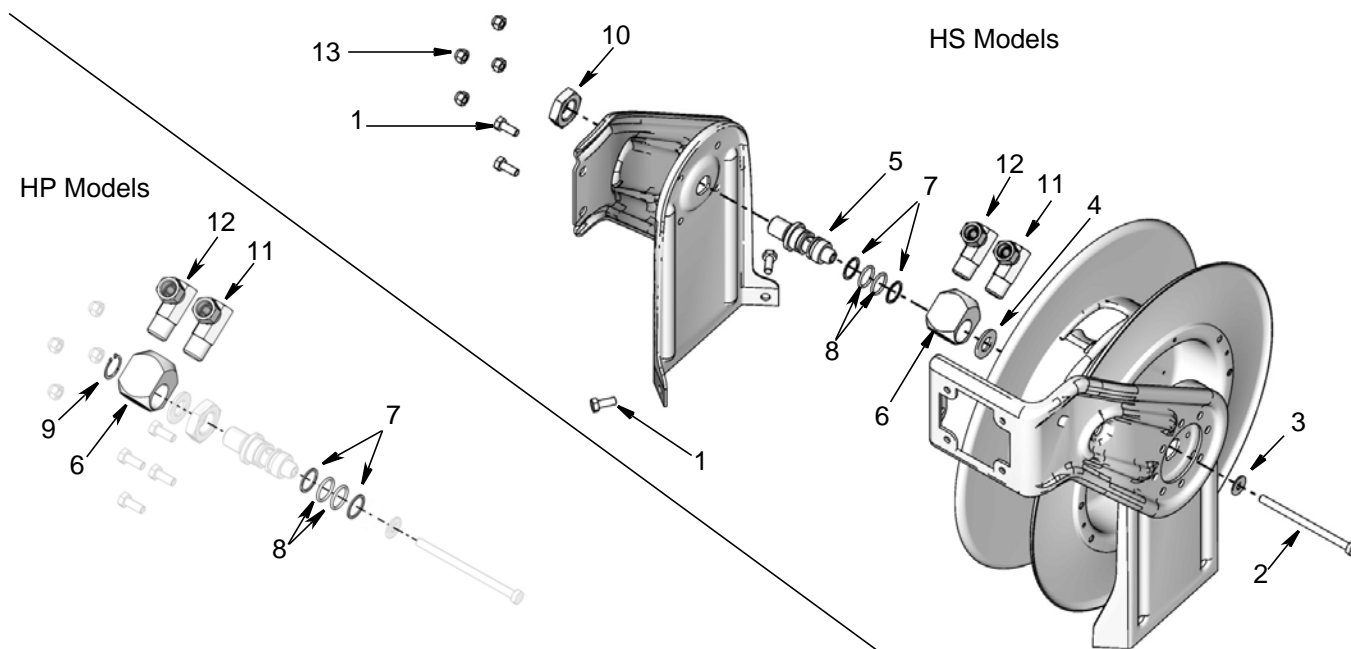


FIG. 5

Low & Medium Pressure Swivel Kit: 15Y480 Or 24M579 for BSP Reels (FIG. 5)

Ref.	Description	Qty/Model	
		HP	HS
1	SCREW M8 x 1.25 x 20	◆	4
2	SCREW, M8 x 1.25 x 120	◆	1
3	WASHER, 5/16"	◆	1
4	WASHER, flat, 5/8"	◆	1
5	SHAFT, swivel	◆	1
6	ELBOW, swivel, 1/2"	1	1
7†	RING, backup	2	2
8†	O-RING	2	2
9	RING, retaining	1	◆
10	NUT, 1/2" NPSM	◆	1
11	ELBOW, male x female, 1/2" x 3/8"	1	1
12	ELBOW, male x female, 1/2" x 1/2"	1	1
13	NUT, M8 x 1.25	◆	4

† Be sure backup ring (7) and o-rings (8) are assembled in correct order. Refer to drawing to verify order.

◆ All parts 1-13 are included in kit. Parts with a ◆ are not used.

Low & Medium Pressure Swivel Seal Kit: 24A952 (FIG. 5)

Ref.	Description	Qty
1	SCREW, M8 x 1.25 x 20	4
2	SCREW, M8 x 1.25 x 120	1
3	WASHER, flat, 5/16"	1
4	WASHER, 5/8"	1
7	RING, backup	2
8	O-RING	2
9	RING, retaining	1
13	NUT, M8 x 1.25	4

NOTE:

- Low and Medium Pressure Swivel Kits include **all** parts necessary to replace the swivel assembly, including the seals which are also provided in Swivel Seal Kit 24A952.
- If only the swivel seals require replacement, use Swivel Seal Kit 24A952.

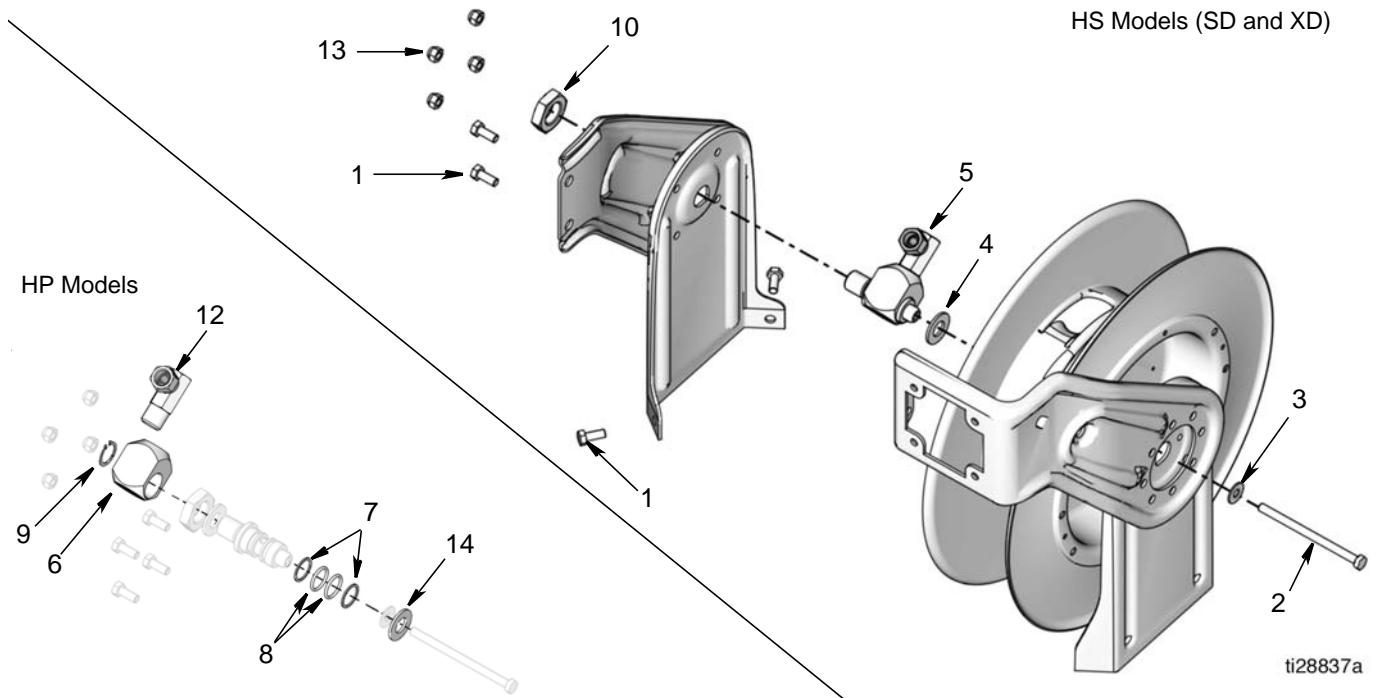


FIG. 6

**High Pressure, Single Pedestal (SD) Swivel Kit:
26A155 or 26A156 for BSP Reels (Fig. 6)**

Ref.	Description	Qty/Model	
		HP	HS
6	ELBOW, swivel, 3/8"	1	1
7†	RING, backup	2	2
8†	O-RING	2	2
9	RING, retaining	1	1
12	ELBOW, male x female, 3/8" x 3/8"	1	1
14	WASHER, 7/8" ID	1	◆

† Be sure backup ring (7) and o-rings (8) are assembled in correct order. Refer to drawing to verify order.

◆ All parts 1-13 are included in kit. Parts with a ◆ are not used.

NOTE:

- High Pressure Swivel Kits include **all** parts necessary to replace the swivel assembly, including the seals which are also provided in Swivel Seal Kit 24A953.
- If only the swivel seals require replacement, use Swivel Seal Kit 24A953.
- Swivel Seal Kits are not available for High Pressure, Dual Pedestal (XD) Reels. If seal replacement is required, Swivel Kit 26A153 or 26A154 should be used.

**High Pressure, Single Pedestal (SD) Swivel Seal Kit:
24A953 (Fig. 6)**

Ref.	Description	Qty
1	SCREW M8 x 1.25 x 20	4
2	SCREW, M8 x 1.25 x 120	1
3	WASHER, 5/16"	1
4	WASHER, 5/8"	1
5	SWIVEL, assembly	1
13	NUT, M8 x 1.25	4

**High Pressure, Dual Pedestal (XD) Swivel Seal Kit:
26A153 or 26A154 for BSP Reels (Fig. 6)**

Ref.	Description	Qty
1	SCREW M8 x 1.25 x 20	4
2	SCREW, M8 x 1.25 x 120	1
3	WASHER, 5/16"	1
4	WASHER, 5/8"	1
5	SWIVEL, assembly	1
10	NUT, 3/8" NPSM or BSPP	1
13	NUT, M8 x 1.25	4

*All written and visual data contained in this document reflects the latest product information available at the time of publication.
Graco reserves the right to make changes at any time without notice.*

For patent information, see www.graco.com/patents.

Original instructions. This manual contains English. MM 313432

Graco Headquarters: Minneapolis

International Offices: Belgium, China, Japan, Korea

GRACO INC. AND SUBSIDIARIES • P.O. BOX 1441 • MINNEAPOLIS MN 55440-1441 • USA

Copyright 2009, Graco Inc. All Graco manufacturing locations are registered to ISO 9001.

www.graco.com
Revised April 2016